



FANCOR

Since 1995

Open Showcase



Chocolate Showcase



Upright Chiller/Freezer



Cake Showcase



Ice-Cream Showcase



Cold-Drink Dispenser



PROFESSIONAL COMMERCIAL REFRIGERATION

Cold Drink Dispensers



FANCOR brand cold drink dispenser is manufactured by using imported Italian spare parts and hi-tech methods.

Its features: Luxurious design, clear and precise scale for measurement, special stirring design, good ventilation design results in better refrigeration, auto temperature control and easy operation.



Efficient Design

Special design of outer case enables internal heat of the dispenser to be kept at standard level. Perfect for generating optimal temperature.



Clean and Hygienic

Classical plastic tap is replaced by stainless steel tap, which is easier to clean and more hygienic. Both stainless steel and plastic handles are available.



Color of cover

There are two choices of color of the cover, white and blue are available. Double-layered cover is designed for retaining temperature of drinks.



Stirring paddle is used to mix drinks up, preventing formation of sediment.

Plastic bowl with scale.

Cold Drink Dispensers

Dispenser Temperature
5 ~ 10 °C

Dispenser Refrigerant
R134a

Dispenser Voltage
220V/110V



Model	FC-112	FC-212
Dimensions (mm)	260x430x650	410x430x650
Capacity	12L	2x12L

Cold Drink Dispensers

Dispenser Temperature
5 ~ 10 °C

Dispenser Refrigerant
R134a

Dispenser Voltage
220V/110V



Model	FC-312	FC-412
Dimensions (mm)	610x430x650	820x430x650
Capacity	3x12L	4x12L

Cake Showcases



Introduction

The newest cake showcase of FANCOR, with features: internal heating device of glass clears mist on the glass; high humidity keeps cakes fresh, variety of sharp colors. Best choice for bakery.



Cake Showcase

Showcase Temperature
3 ~ 8 °C

Showcase Refrigerant
R134a

Showcase Voltage
220V/110V



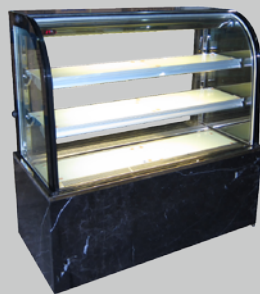
Model	FC-G520RM	FC-G520RB	FC-G520RS
Dimensions (mm)	1200x700x1350	1200x700x1350	1200x700x1350
Capacity	520L	520L	520L
Model	FC-G620RM	FC-G620RB	FC-G620RS
Dimensions (mm)	1500x700x1350	1500x700x1350	1500x700x1350
Capacity	620L	620L	620L
Model	FC-G720RM	FC-G720RB	FC-G720RS
Dimensions (mm)	1800x700x1350	1800x700x1350	1800x700x1350
Capacity	720L	720L	720L

Cake Showcase

Showcase Temperature
3 ~ 8 °C

Showcase Refrigerant
R134a

Showcase Voltage
220V/110V



Model	FC-G900A	FC-G900R	FC-G310RL
Dimensions (mm)	900x550x1220	900x550x1220	1200x700x1200
Capacity	280L	310L	310L
Model	FC-G1200A	FC-G1200R	FC-G410RL
Dimensions (mm)	1200x550x1220	1200x550x1220	1500x700x1200
Capacity	380L	410L	410L
Model	FC-G1500A	FC-G1500R	FC-G510RL
Dimensions (mm)	1500x550x1220	1500x550x1220	1800x700x1200
Capacity	480L	510L	510L



Cake Showcase

Showcase Temperature
3 ~ 8 °C

Showcase Refrigerant
R134a

Showcase Voltage
220V/110V



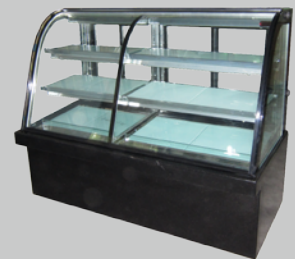
Model	FC-G310M	FC-G310S	FC-G310B
Dimensions (mm)	1200x700x1200	1200x700x1200	1200x700x1200
Capacity	310L	310L	310L
Model	FC-G410M	FC-G410S	FC-G410B
Dimensions (mm)	1500x700x1200	1500x700x1200	1500x700x1200
Capacity	410L	410L	410L
Model	FC-G510M	FC-G510S	FC-G510B
Dimensions (mm)	1800x700x1200	1800x700x1200	1800x700x1200
Capacity	510L	510L	510L

Cake Showcase

Showcase Temperature
3 ~ 8 °C

Showcase Refrigerant
R134a

Showcase Voltage
220V/110V



Model	FC-G430M	FC-G320M	FC-G420AH
Dimensions (mm)	1200x800x1200	1200x700x1200	1500x700x1200
Capacity	430L	320L	420L
Model	FC-G530M	FC-G420M	FC-G520AH
Dimensions (mm)	1500x800x1200	1500x700x1200	1800x700x1200
Capacity	530L	420L	520L
Model	FC-G630M	FC-G520M	FC-G620AH
Dimensions (mm)	1800x800x1200	1800x700x1200	2000x700x1200
Capacity	630L	520L	620L

Marble Colors:





Cake Showcase

Showcase Temperature
3 ~ 8 °C

Showcase Refrigerant
R134a

Showcase Voltage
220V/110V



Model	FC-G320AW	FC-G340RB	FC-G320AP
Dimensions (mm)	1200x850x1650	1200x800x1200	1200x700x1200
Capacity	320L	480L	320L
Model	FC-G420AW	FC-G440RB	FC-G420AP
Dimensions (mm)	1500x850x1650	1500x800x1200	1500x700x1200
Capacity	420L	580L	420L
Model	FC-G520AW	FC-G540RB	FC-G520AP
Dimensions (mm)	1800x850x1650	1800x800x1200	1800x700x1200
Capacity	520L	680L	520L

Upright Cake Showcases

Showcase Temperature
3 ~ 8 °C

Showcase Refrigerant
R134a

Showcase Voltage
220V/110V



Model	FC-G630	FC-G730	FC-G650
Dimensions (mm)	1200x700x1500	1200x700x1800	1200x700x1500
Capacity	680L	760L	680L
Model	FC-G640	FC-G830	FC-G750
Dimensions (mm)	1500x700x1500	1500x700x1800	1500x700x1500
Capacity	780L	860L	780L
Model	FC-G650	FC-G930	FC-G850
Dimensions (mm)	1800x700x1500	1800x700x1800	1800x700x1500
Capacity	880L	960L	880L

Chocolate Showcases

Showcase Temperature
3 ~ 8 °C

Showcase Refrigerant
R134a

Showcase Voltage
220V/110V



Model	FC-CG90	FC-CG120B	FC-CG65
Dimensions (mm)	900x700x1200	1200x700x1200	650x700x1200
Capacity	160L	230L	120L

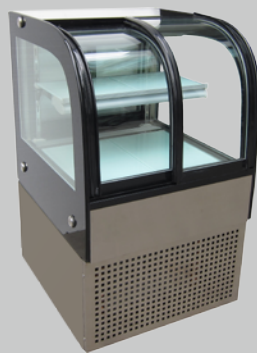


Slide Door Showcases

Showcase Temperature
3 ~ 8 °C

Showcase Refrigerant
R134a

Showcase Voltage
220V/110V



Model	FC-SD60	FC-SD900G	FC-SD320
Dimensions (mm)	600x680x1000	900x550x1220	1200x700x1200
Capacity	60L	280L	320L
Model	FC-SD580	FC-SD1200G	FC-SD420
Dimensions (mm)	1200x700x1350	1200x550x1220	1500x700x1200
Capacity	420L	380L	420L
Model	FC-SC780	FC-SD1500G	FC-SD520
Dimensions (mm)	1500x700x1350	1500x550x1220	1800x700x1200
Capacity	520L	480L	520L

Upright Display Freezers



Features:

Air cool design

Intensive circulating design increases velocity of freezing

Intensive heating device of glass clears mist on the glass, commodities can be seen clearly

Automatic electric defrosting system.

Upright Display Freezers

Freezer Temperature
-15 ~ -20 °C

Freezer Refrigerant
R404

Freezer Voltage
220V/110V



Model	FC-UGF560	FC-UGF960	FC-UGF1800
Dimensions (mm)	640x750x2150	1260x750x2150	1860x750x2150
Capacity	560L	960L	1800L

Upright Display Freezers

Freezer Temperature
-15 ~ -20 °C

Freezer Refrigerant
R404

Freezer Voltage
220V/110V



Model	FC-UGF480	FC-TGF50	FC-CGF88
Dimensions (mm)	670x700x1980	500x450x800	1300x880x1380
Capacity	480L	50L	290L For 1/3 6GN

Ice-Cream Showcases

Freezer Temperature
-15 ~ -20 °C

Freezer Refrigerant
R404

Freezer Voltage
220V/110V



Model	FC-CGF130	FC-CGF150	FC-CGF180
Dimensions (mm)	1300x1080x1380	1500x1080x1380	1800x1080x1380
Capacity	580L For 1/3 12GN	680L For 1/3 14GN	780L For 1/3 18GN

Upright Display Coolers



Features:

- Two choices of glass door: Demist glass and insulating glass
- Auto return door
- Air cool design enables standard temperature to be reached rapidly
- Low power consumption

Upright Display Coolers

Cooler Temperature
0 ~ 8 °C

Cooler Refrigerant
R134a

Cooler Voltage
220V/110V



Model	FC-UG280F	FC-UG360F	FC-UG550F
Dimensions (mm)	560x600x1780	600x630x1890	700x680x1980
Capacity	310L	360L	550L

Slide Door Display Coolers Upright Display Coolers

Cooler Temperature
0 ~ 8 °C

Cooler Refrigerant
R134a

Cooler Voltage
220V/110V



Model	FC-SD600F	FC-UG600F	FC-UG1300F
Dimensions (mm)	900x650x1980	900x650x1980	1750x650x1980
Capacity	600L	600L	1300L
Model	FC-SD860F	FC-UG860F	
Dimensions (mm)	1150x650x1980	1150x650x1980	
Capacity	860L	860L	
Model	FC-SD980F	FC-UG980F	
Dimensions (mm)	1360x650x1980	1360x650x1980	
Capacity	980L	980L	



Upright Display Coolers

Cooler Temperature
0 ~ 8 °C

Cooler Refrigerant
R134a

Cooler Voltage
220V/110V



Model	FC-SC480	FC-UG560F	FC-UG930F
Dimensions (mm)	480x480x1700	640x750x2150	1150x750x2150
Capacity	380L	560L	930L
Model	FC-SC580		
Dimensions (mm)	580x580x1900		
Capacity	480L		

Upright Display Coolers

Cooler Temperature
0 ~ 8 °C

Cooler Refrigerant
R134a

Cooler Voltage
220V/110V



Front



Back

Model	FC-UG370	FC-UG980T	FC-UG1800B
Dimensions (mm)	600x630x1850	1260x750x2150	1860x750x2150
Capacity	370L	980L	1800L



Slide Door Display Coolers

Cooler Temperature
0 ~ 8 °C

Cooler Refrigerant
R134a

Cooler Voltage
220V/110V

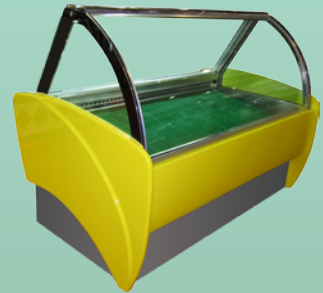


Meat Showcase

Showcase Temperature
-5 ~ 0 °C

Showcase Refrigerant
R134a

Showcase Voltage
220V/110V



Model	FC-SD1800F
Dimensions (mm)	1800x650x1980
Capacity	1300L
Model	FC-SD1800FD
Dimensions (mm)	1800x800x1980
Capacity	1800L

Model	FC-DK750
Dimensions (mm)	1500x1080x1380
Capacity	750L
Model	FC-DK850
Dimensions (mm)	1800x1080x1380
Capacity	850L
Model	FC-DK950
Dimensions (mm)	2000x1080x1380
Capacity	950L

Wine Chillers

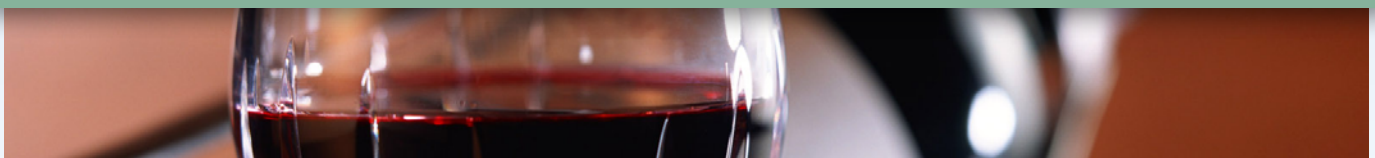
Chiller Temperature
5 ~ 15 °C

Chiller Refrigerant
R134a

Chiller Voltage
220V/110V



Model	FC-WG100	FC-WG60	FC-WG150
Dimensions (mm)	1004x600x2350	600x630x1890	1575x600x2350
Capacity	980L	380L	1500L
Model			FC-WG200
Dimensions (mm)			2008x600x2350
Capacity			2000L



Deli Showcases



Features:

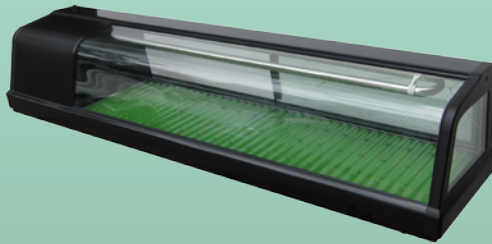
Arc insulating glass makes it look elegant and attractive
Desktop display gives a sense of modern

Sushi Showcases

Showcase Temperature
5 ~ 10 °C

Showcase Refrigerant
R134a

Showcase Voltage
220V/110V



Model	FC-GL1200A	FC-GL1200B
Dimensions (mm)	1200x350x310	1200x370x525
Capacity	60L	120L
Model	FC-GL1500A	FC-GL1500B
Dimensions (mm)	1500x350x310	1500x370x525
Capacity	90L	150L

Cold Display Showcases

Showcase Temperature
2 ~ 8 °C

Showcase Refrigerant
R134a

Showcase Voltage
220V/110V



Hot Display Showcases

Showcase Temperature
40 ~ 60 °C

Showcase Voltage
220V/110V



Model	FC-E430
Dimensions (mm)	900x465x640
Capacity	70L
Model	FC-E440
Dimensions (mm)	1200x465x640
Capacity	94L
Model	FC-E450
Dimensions (mm)	1500x465x640
Capacity	118L

Model	FC-H430
Dimensions (mm)	900x465x640
Capacity	70L
Model	FC-H440
Dimensions (mm)	1200x465x640
Capacity	94L
Model	FC-H450
Dimensions (mm)	1500x465x640
Capacity	118L



Open Showcases



Features:

Open-Style design makes selection of commodities more convenient
Internal air circulation generated by air fan enhances cooling effect

Open Showcases

Showcase Temperature
5 ~ 10 °C

Showcase Refrigerant
R22

Showcase Voltage
220V/110V



Model	FC-GK600	FC-GK600L	FC-GK95
Dimensions (mm)	950x700x1350	950x700x1350	950x700x1980
Capacity	600L	600L	900L
Model	FC-GK700	FC-GK700L	FC-GK120
Dimensions (mm)	1200x700x1350	1200x700x1350	1200x700x1980
Capacity	700L	700L	1200L
Model	FC-GK800	FC-GK800L	FC-GK150
Dimensions (mm)	1500x700x1350	1500x700x1350	1500x700x1980
Capacity	800L	800L	1500L

Open Showcases

Showcase Temperature
5 ~ 10 °C

Showcase Refrigerant
R22

Showcase Voltage
220V/110V



Model	FC-GK95N
Dimensions (mm)	950x700x1980
Capacity	880L
Model	FC-GK120N
Dimensions (mm)	1200x700x1980
Capacity	1200L
Model	FC-GK150N
Dimensions (mm)	1500x700x1980
Capacity	1500L



Stainless Steel Series



Features:

HFC eco-friendly refrigerant (R134a, R404a)

Auto return door

Low power consumption

Upright Chillers/Freezers

Chiller Temperature
0 ~ 5 °C
Chiller Refrigerant
R134a
Chiller Voltage
220V/110V

Freezer Temperature
-15 ~ -20 °C
Freezer Refrigerant
R404
Freezer Voltage
220V/110V



Model (Chiller)	FC-UC67	FC-UC76	FC-UC100
Model (Freezer)	FC-UF67	FC-UF76	FC-UF100
Dimensions (mm)	670x700x1960	760x700x1960	1000x700x1960
Capacity	500L	600L	800L
Model (Chiller)	FC-UC67D	FC-UC76D	FC-UC100D
Model (Freezer)	FC-UF67D	FC-UF76D	FC-UF100D
Dimensions (mm)	670x800x1960	760x800x1960	1000x800x1960
Capacity	550L	700L	950L

Upright Chillers/Freezers

Chiller Temperature
0 ~ 5 °C
Chiller Refrigerant
R134a
Chiller Voltage
220V/110V

Freezer Temperature
-15 ~ -20 °C
Freezer Refrigerant
R404
Freezer Voltage
220V/110V



Model (Chiller)	FC-UC122	FC-UC150	FC-UC180
Model (Freezer)	FC-UF122	FC-UF150	FC-UF180
Capacity	1000L	1250L	1550L
Dimensions (mm)	1220x700x1960	1500x700x1960	1800x700x1960
Model (Chiller)	FC-UC122D	FC-UC150D	FC-UC180D
Model (Freezer)	FC-UF122D	FC-UF150D	FC-UF180D
Capacity	1150L	1500L	1800L
Dimensions (mm)	1220x800x1960	1500x800x1960	1800x800x1960

Upright Display Chillers

Chiller Temperature
0 ~ 5 °C

Chiller Refrigerant
R134a

Chiller Voltage
220V/110V



Model	FC-UG67	FC-UG76	FC-UG122
Dimensions (mm)	670x700x1960	760x700x1960	1220x700x1960
Capacity	500L	600L	1000L
Model	FC-UG67D	FC-UG76D	FC-UG122D
Dimensions (mm)	670x800x1960	760x800x1960	1220x800x1960
Capacity	550L	700L	1150L

Upright Display Chillers&Freezers

Chiller Temperature
0 ~ 5 °C

Chiller Refrigerant
R134a

Chiller Voltage
220V/110V

Freezer Temperature
-15 ~ -20 °C

Freezer Refrigerant
R404

Freezer Voltage
220V/110V



Model	FC-UGF122H	FC-UCF122	FC-UCF150
Dimensions (mm)	1220x700x1960	1220x700x1960	1500x700x1960
Capacity	1000L	1000L	1250L
Model	FC-UGF122HD	FC-UCF122D	FC-UCF150D
Dimensions (mm)	1220x800x1960	1220x800x1960	1500x800x1960
Capacity	1150L	1150L	1500L



Counter Chillers/Freezers

Chiller Temperature
0 ~ 5 °C

Chiller Refrigerant
R134a

Chiller Voltage
220V/110V



Freezer Temperature
-15 ~ -20 °C

Freezer Refrigerant
R404

Freezer Voltage
220V/110V

Model (Chiller)	FC-CC120-60	FC-CC150-60	FC-CC180-60
Model (Freezer)	FC-CF120-60	FC-CF150-60	FC-CF180-60
Dimensions (mm)	1200x600x800	1500x600x800	1800x600x800
Capacity	250L	350L	380L
Model (Chiller)	FC-CC120-75	FC-CC150-75	FC-CC180-75
Model (Freezer)	FC-CF120-75	FC-CF150-75	FC-CF180-75
Dimensions (mm)	1200x750x800	1500x750x800	1800x750x800
Capacity	330L	400L	480L

Counter Drawer Chillers

Chiller Temperature
0 ~ 5 °C

Chiller Refrigerant
R134a

Chiller Voltage
220V/110V



Model	FC-CCD120-60	FC-CCD150-60	FC-CCD180-60
Dimensions (mm)	1200x600x800	1500x600x800	1800x600x800
Capacity	250L	300L	380L
Model	FC-CCD120-75	FC-CCD150-75	FC-CCD180-75
Dimensions (mm)	1200x750x800	1500x750x800	1800x750x800
Capacity	330L	400L	480L

Counter Drawer Chillers

Chiller Temperature
0 ~ 5 °C

Chiller Refrigerant
R134a

Chiller Voltage
220V/110V



Model	FC-CCD120-60S	FC-CCD150-60S	FC-CCD180-60S
Dimensions (mm)	1200x600x600	1500x600x600	1800x600x600
Capacity	180L	240L	300L
Model	FC-CCD120-75S	FC-CCD150-75S	FC-CCD180-75S
Dimensions (mm)	1200x750x600	1500x750x600	1800x750x600
Capacity	230L	300L	400L

Counter Chillers

Chiller Temperature
0 ~ 5 °C

Chiller Refrigerant
R134a

Chiller Voltage
220V/110V



Model	FC-CG150-60	FC-SC122-72	FC-SC69-72
Dimensions (mm)	1500x600x800	1220x720x820	690x720x820
Capacity	300L	300L	150L
Model	FC-CG150-75		
Dimensions (mm)	1500x750x800		
Capacity	400L		







Products Overview

Our **Cold Drink Dispensers** are produced with high quality standard and are hygienic and safe. They are made of stainless steel. The transparent P.C. plastic bowls are unbreakable. Motors and control units of our dispensers are Italian-made.

Our **Upright Display Freezers** are made with demist vacuum coating glass doors imported from Taiwan. France-made compressors and R404 eco-friendly refrigerant are used. Temperature of freezers can be as low as -20°C. With electric controls, the cooling effect is dependable.

Our **Upright Display Chillers** feature air cool design. Compressors are either Thai-made or made by Sino-Italian manufacturer. R134a eco-friendly refrigerant is used. The cooling effect is reliable with electric controls.

Our **Cake Display Showcases** are designed stylishly. Glass is either Chinese-made first-rate electrothermal glass or Taiwanese-made demist vacuum coating glass. Compressors are products manufactured by Thai or Sino-Italian plants. With electric controls, the cooling effect is reliable.

Our **Deli Showcases** feature modern design. Two types of showcases are available – cooling and heating. With the use of fan coil, temperature of our sushi showcases can be driven down quickly. Electric controls make cooling effect dependable.

Our **Stainless Steel Refrigerators** are with attractive design. All of them are air-cooled with fan-coil motors.

Chillers – Temperature is in between 0°C to -5°C. Compressors are either Thai-made or made by Sino-Italian manufacturer. The fan-coil motors are imported from Italy. Electric controls of the chillers are dependable.

Freezers – Temperature is in between -15°C to -20°C. Thai-made and France-made compressors are used. The fan-coil motors are imported from Italy. Cooling effect is reliable with electric controls.

Our **Stainless Steel Counter Chillers** are manufactured with fan-coil motors imported from Germany. Thai-made or Sino-Italian manufactured compressors are used and they are located in a way that occupies little space. Fast cooling effect can be achieved with strong blow of cool air internally and with electric controls, the cooling effect is reliable.

Our **Open Showcases** feature modern design. Compressors and fan-coil motors are products of France and Italy respectively. Fan-coil motors are located at the back of the showcases. Electric controls of the coolers are dependable.